

# **Draft Fish Tissue and Artificial Bottom Fill Reports**

Task Force Meeting

June 23, 2021



# Background

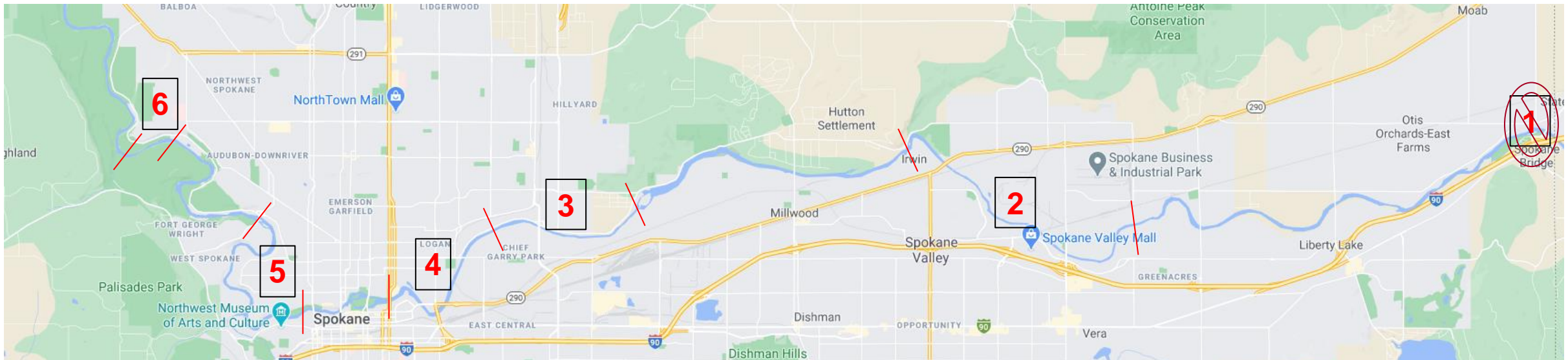
- Two draft reports have been provided for review
  - Evaluation of PCBs in Spokane River Redband Trout
  - Evaluation of PCBs in Spokane River Artificial Bottom Fill Material
- Results had been presented previously as preliminary, now ready to go final
- Comments requested ASAP

# Evaluation of PCBs in Spokane River Redband Trout

- Part of SRRTTF's long-term PCB monitoring program
  - Designed to demonstrate measurable progress is being made toward meeting applicable water quality criteria for PCBs
  - First year of a longer effort
- Using year-old Redband Trout as indicator species
- Twenty-five fish collected in each of five reaches in fall of 2020
  - Composited into samples containing five fish

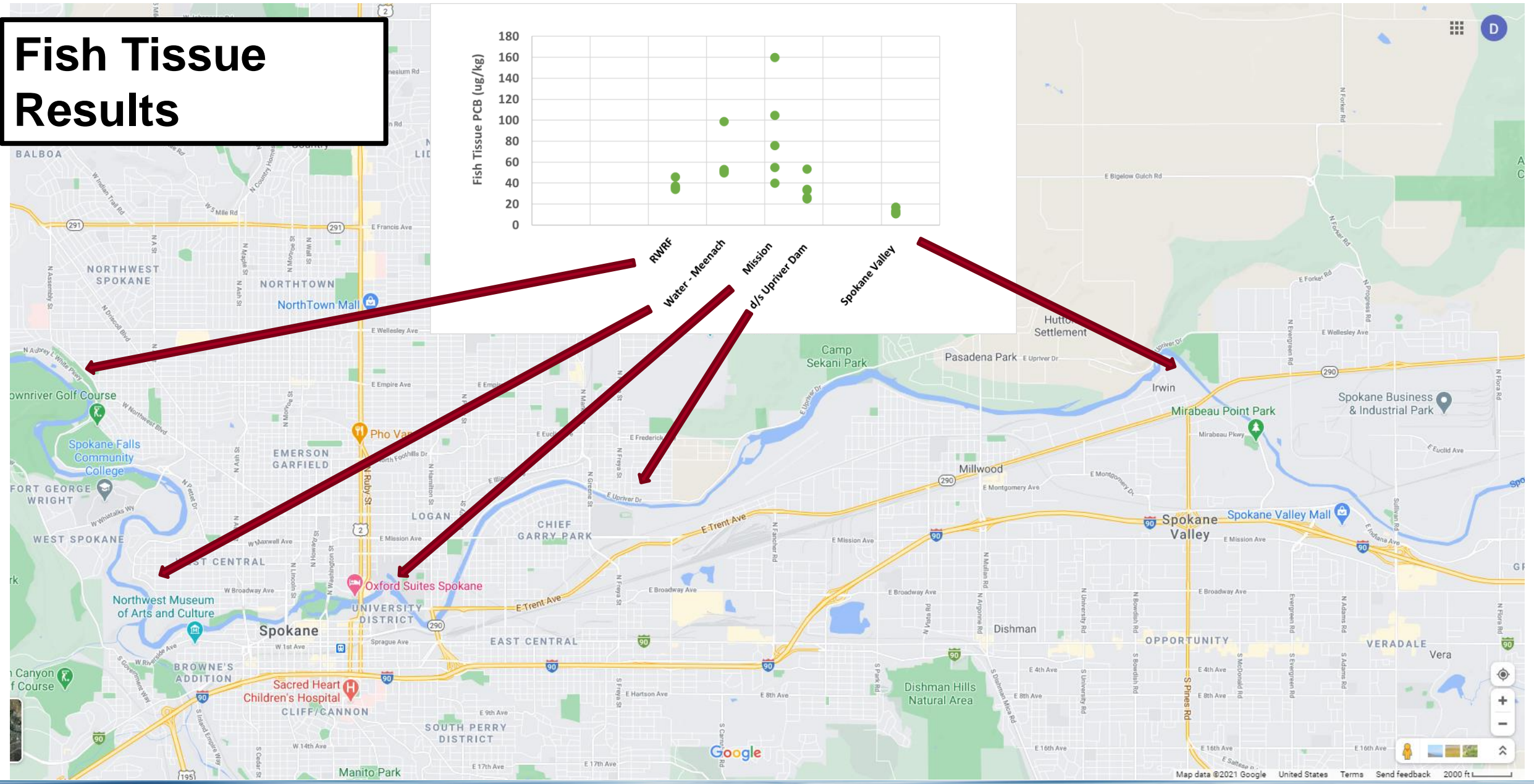
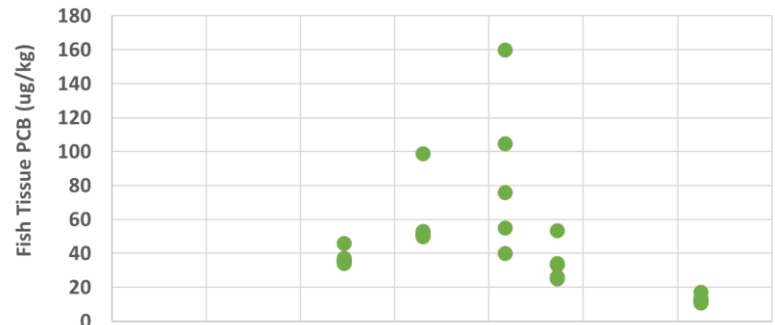
# Fish Sampling Locations

1. State Line
  - Insufficient numbers of fish available
2. Flora Road to Donkey Island
3. Upriver Dam to Crestline Street
4. Crestline Street to Division Street (Mission Reach)
5. Water St. to TJ Meenach
6. RWRF to the kayak takeout site



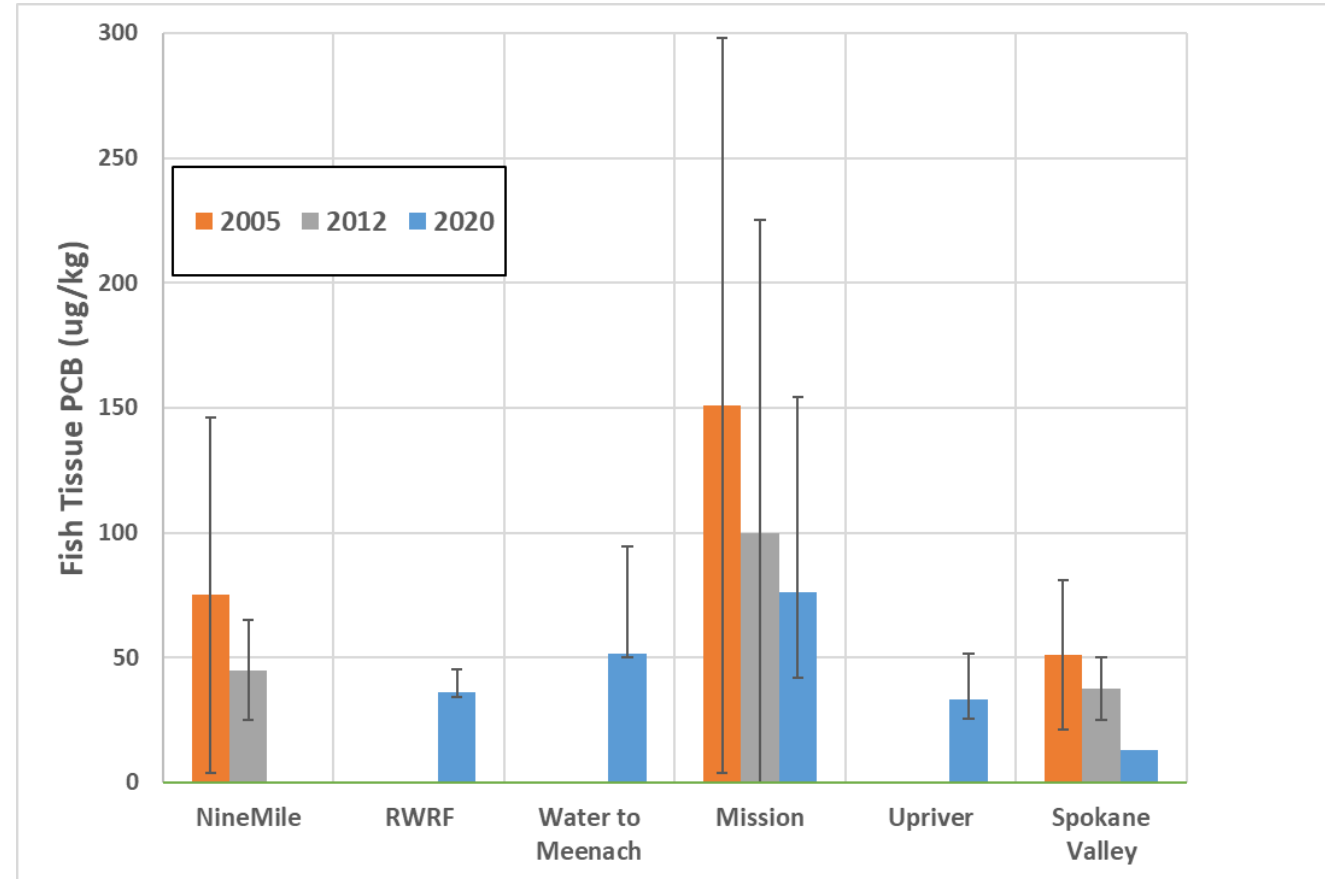


# Fish Tissue Results



# How Do Trout Results Compare to Prior Years?

- Similar spatial pattern
  - Mission Reach roughly twice as high as other reaches
- Concentrations lower than prior years
  - Years are not directly comparable
    - Whole fish vs. fillets
    - Year-old trout vs. a mix of ages
  - Designed to establish a baseline against which future years can be compared



# Evaluation of PCBs in Artificial Bottom Fill Material

- PCB concentrations in Mission Reach are elevated compared to other reaches
  - Known PCB loads are not sufficient to explain increased concentrations
- River bottom in Mission Reach was observed to contain large amounts of artificial fill (i.e., bricks, concrete)
  - Identified as potential source of contamination
- Gravity consultants collected samples of artificial fill during spring SPMD sampling
  - Five brick, four concrete, one asphalt



# Sampling Areas

- Samples collected from four areas in vicinity of the highest biofilm PCB concentrations

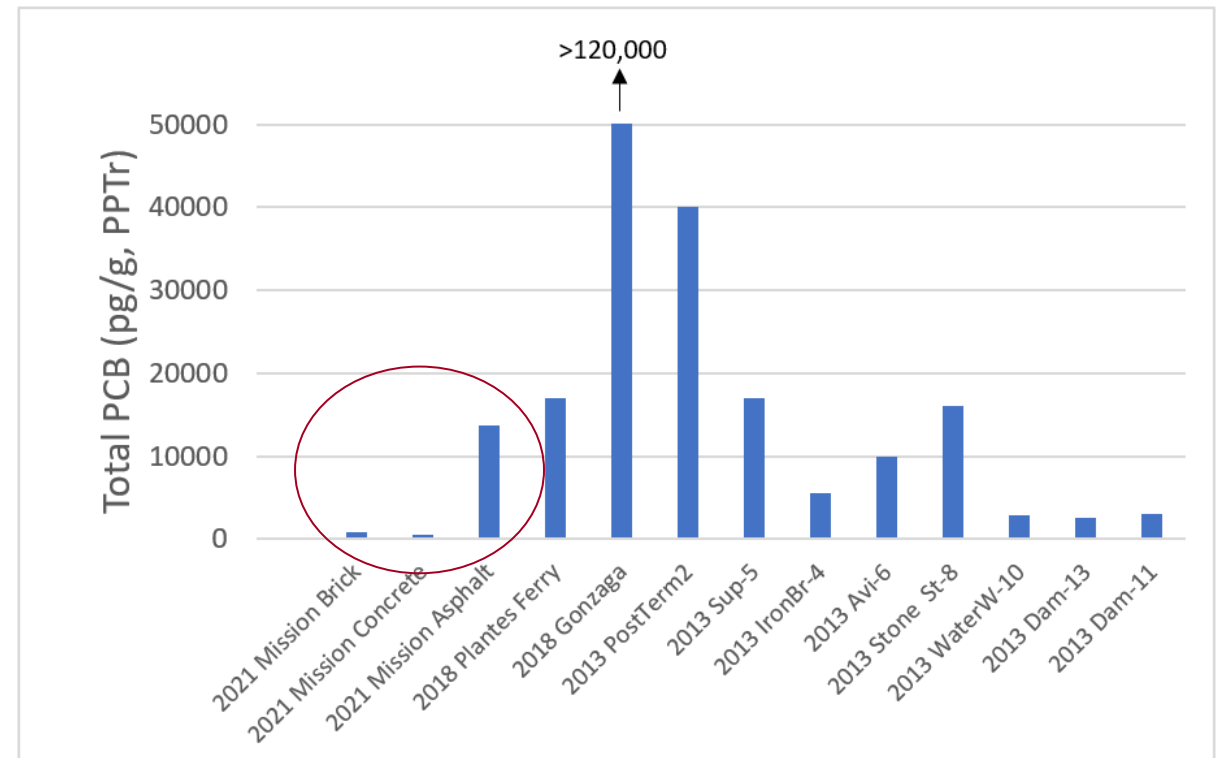
Area Number	Location Descriptor
1	Behind Northern Lights Brewing
2	Right bank halfway between Northern Lights Brewing and foot bridge
3	Left bank near foot bridge
4	Left bank across from Northern Lights Brewing





# Results Compared to PCBs in Naturally Occurring Sediment

- Recent Ecology sediment PCB sampling
  - Urban Waters Program in 2013
  - Environmental Assessment Program biofilm study in 2018
- PCBs in artificial fill not noticeably higher than in naturally occurring sediment



# Finalizing Reports

- Intent is to seek approval of reports at next Task Force meeting
- Would appreciate comments ASAP
  - Goal is to incorporate all feedback prior to the end of June