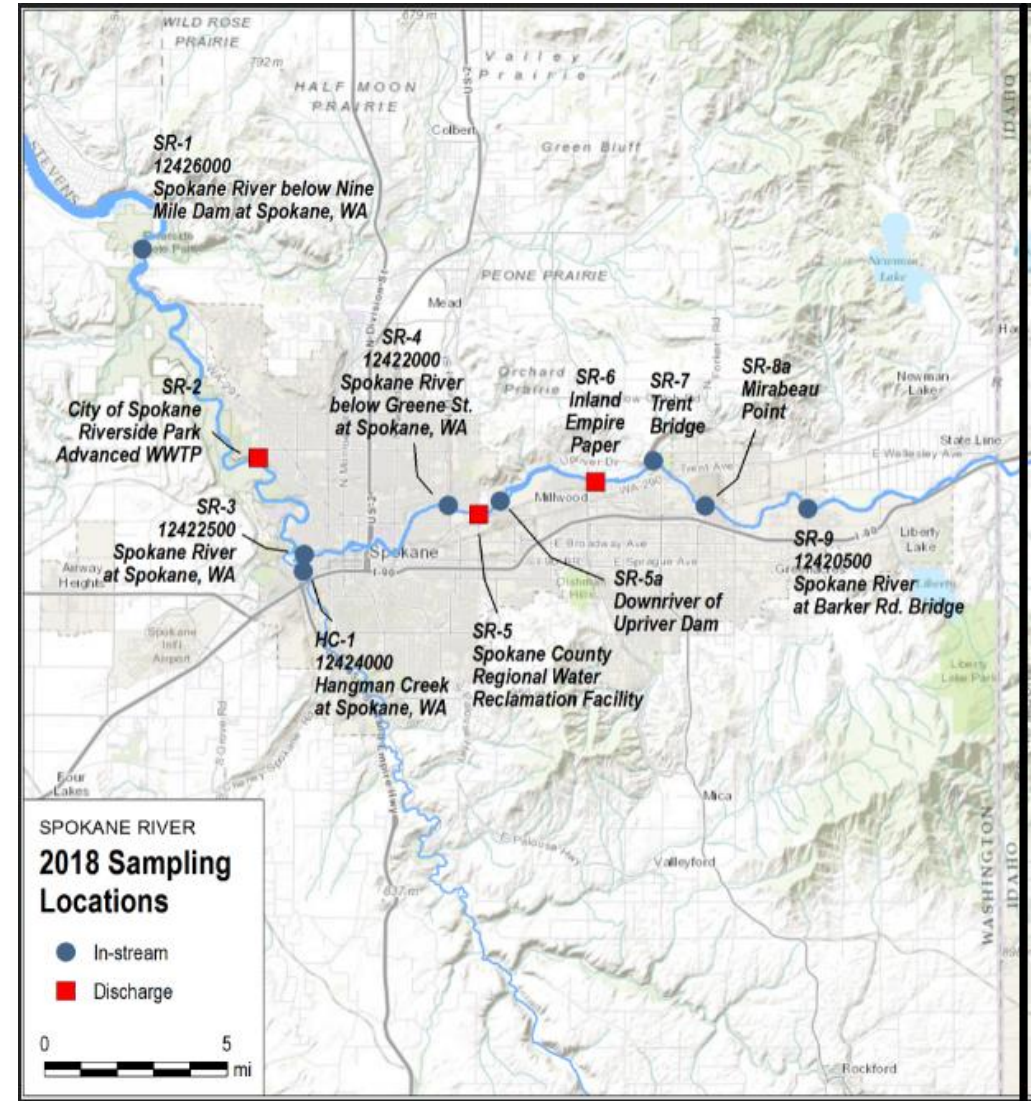


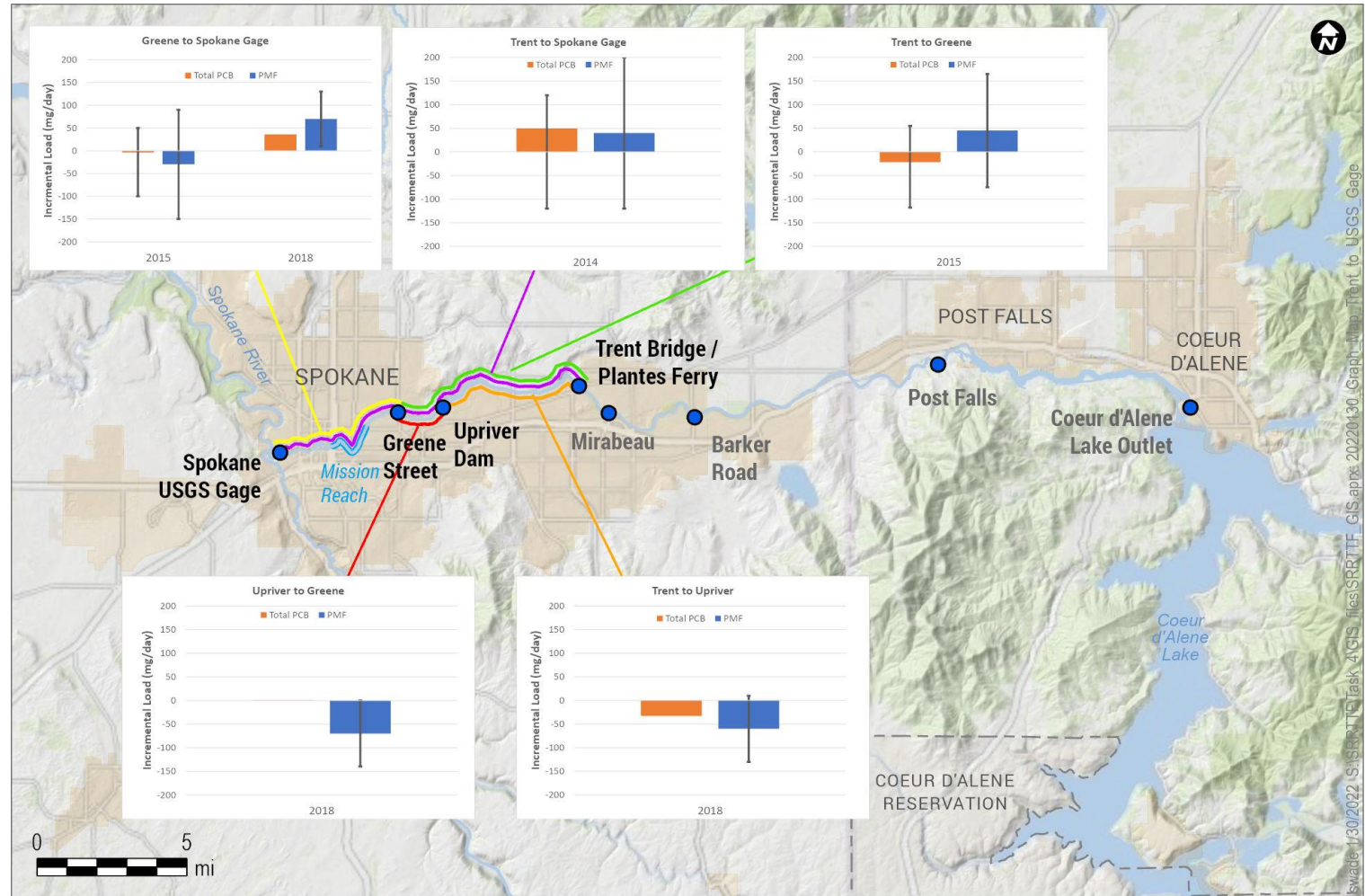
# Synoptic Survey Scope Expansion?

- Task Force has already approved a synoptic survey to support a second mass balance assessment between the USGS Gage and Nine Mile Dam
  - Single mass balance assessment exists for that reach from 2018
- Reasons exist for expanding spatial coverage of this survey upstream
  - Assess loading from Mission Reach
  - Better explain observed shift in homolog pattern



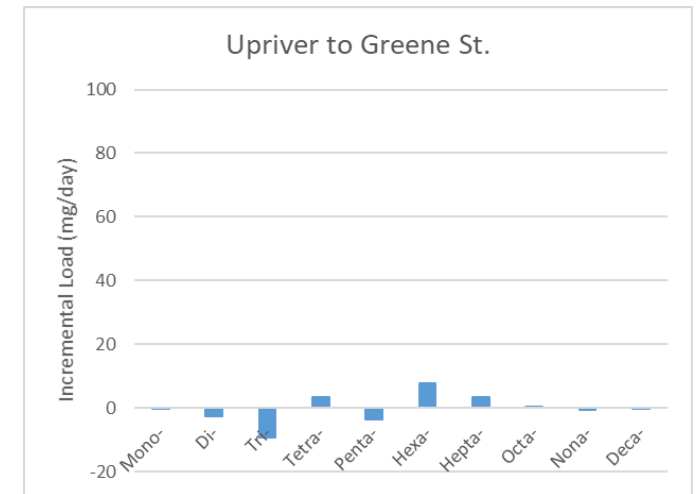
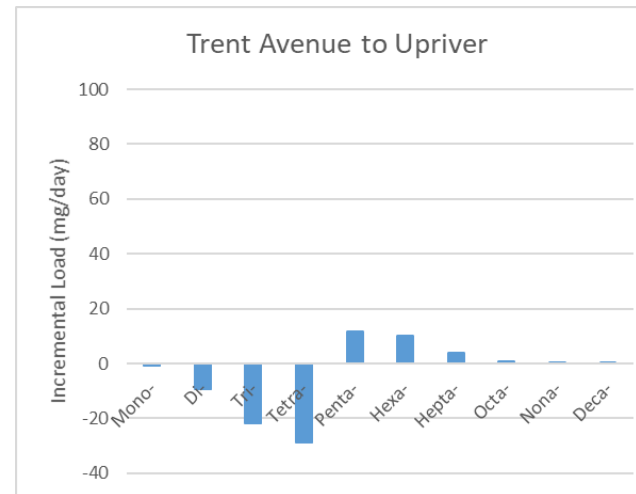
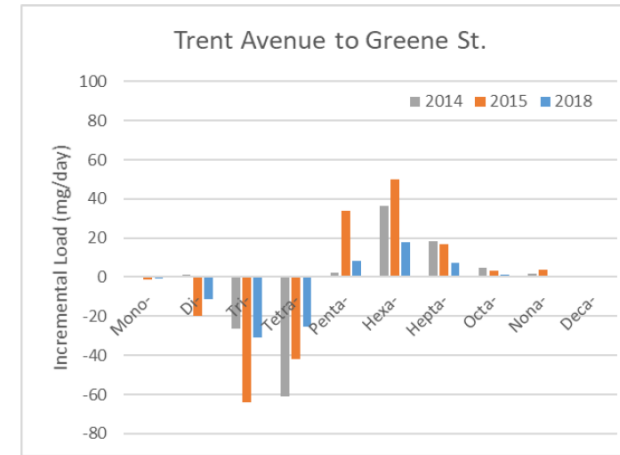
# Rationale for Expanding the Spatial Scope of Survey Upstream

- Prior mass balances showed potential for additional load entering between Greene and USGS gage
  - This section contains the Mission Reach



# Rationale for Expanding the Spatial Scope of Survey Upstream

- Homolog-specific mass balances showed shift in homolog patterns between Trent/Plantes Ferry and Greene St.
  - 2018 results suggest that the shift is occurring between Trent/Plantes Ferry and Upriver Dam





# Potential Additional Sampling Locations

- Trent/Plantes Ferry
- Upstream of Upriver Dam
- Downstream of Upriver Dam
- Greene St.
- Lower end of Mission Reach?

