

Spokane River Regional Toxics Task Force Next Level Historical Review

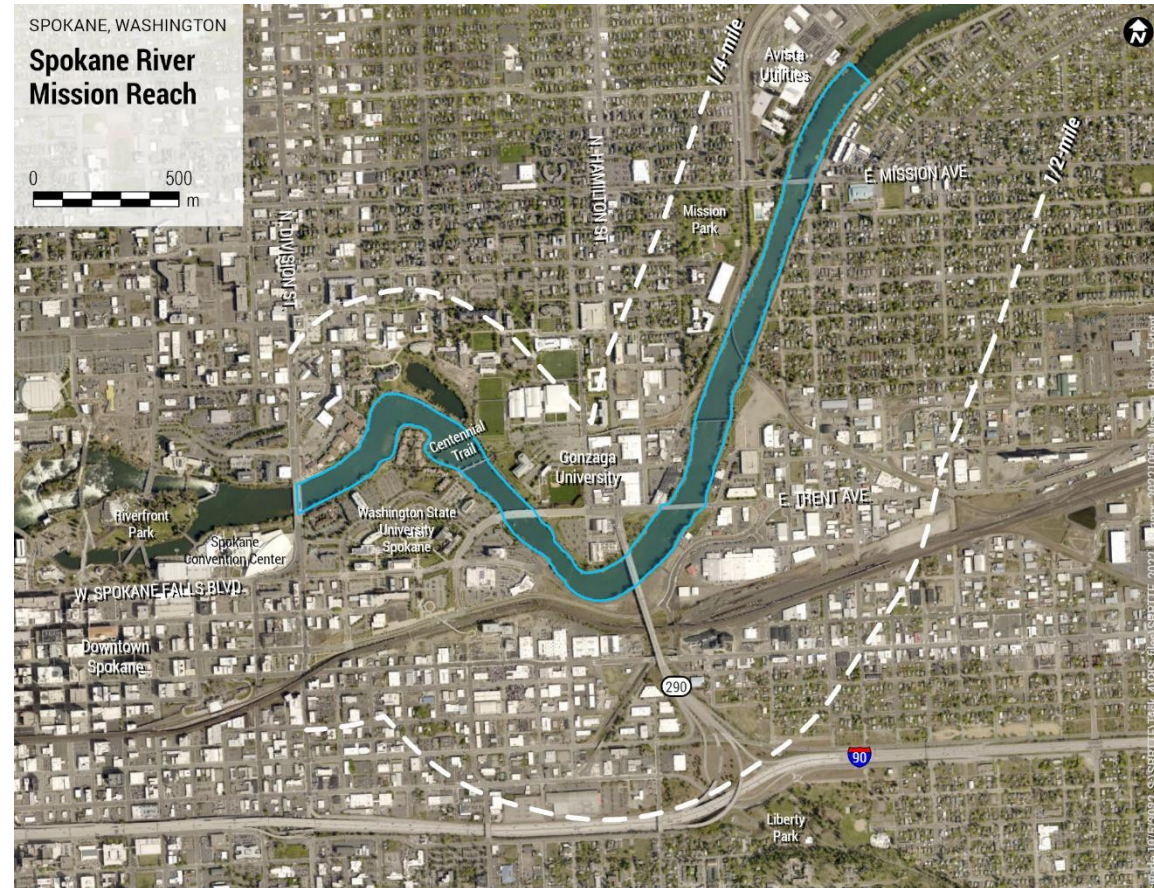
November 30, 2022

Next Level Historical Review

- Scope
 - Review Sanborn fire insurance maps from 1950 to 1980 and identify facilities that were potential sources of PCB release
 - Review relevant Ecology Toxics Cleanup Program documents and associated monitoring data
 - Prioritize sites regarding their potential of being an ongoing PCB source
 - Focus on Mission Reach and Spokane Industrial Park
- Today's intent
 - Solicit final comments and (as appropriate) request Task Force approval

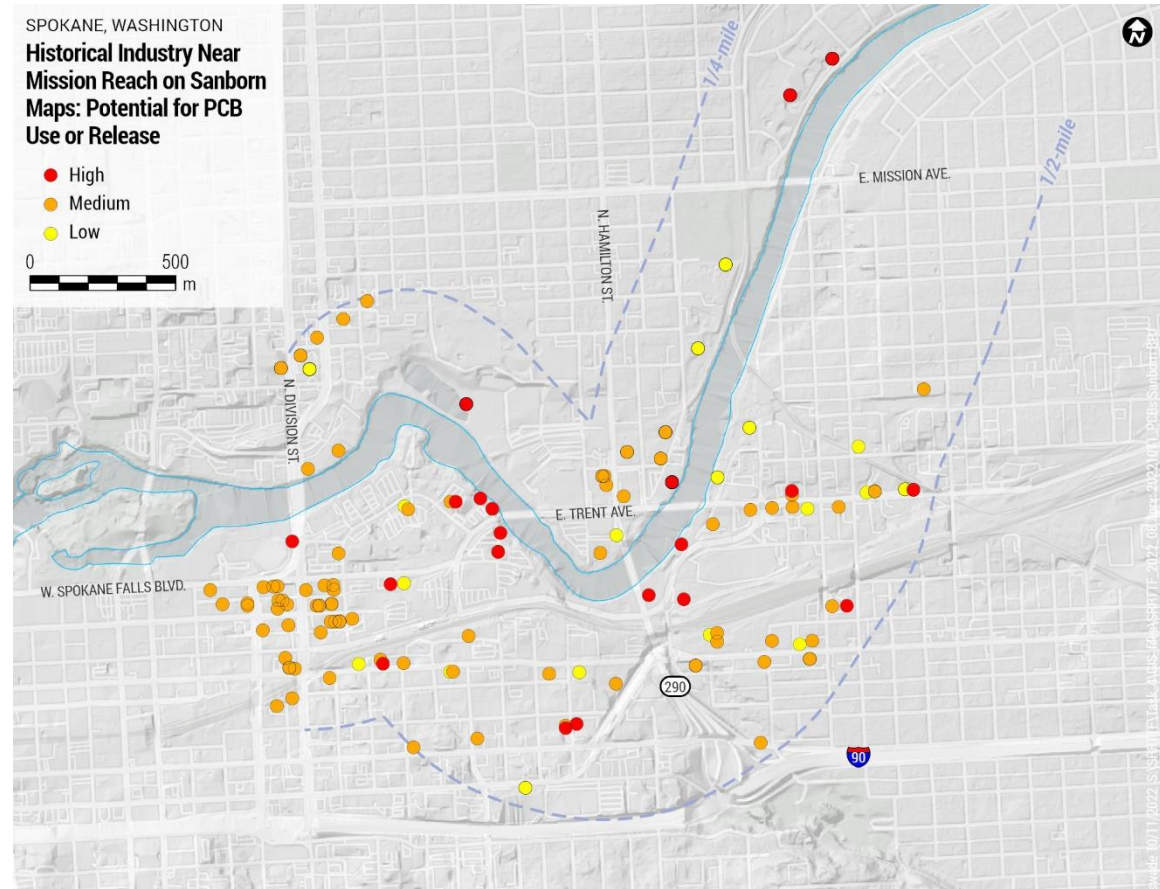
Spatial Coverage of Sanborn Map Review

- Spatial domain defined as with $\frac{1}{4}$ mile north of the river and $\frac{1}{2}$ mile south of the river in the Mission Reach
- No Sanborn maps available for Spokane Industrial Park



Sanborn Map Review

- Sites identified by potential for PCB use or release
- Qualitatively characterized as:
 - High
 - Medium
 - Low

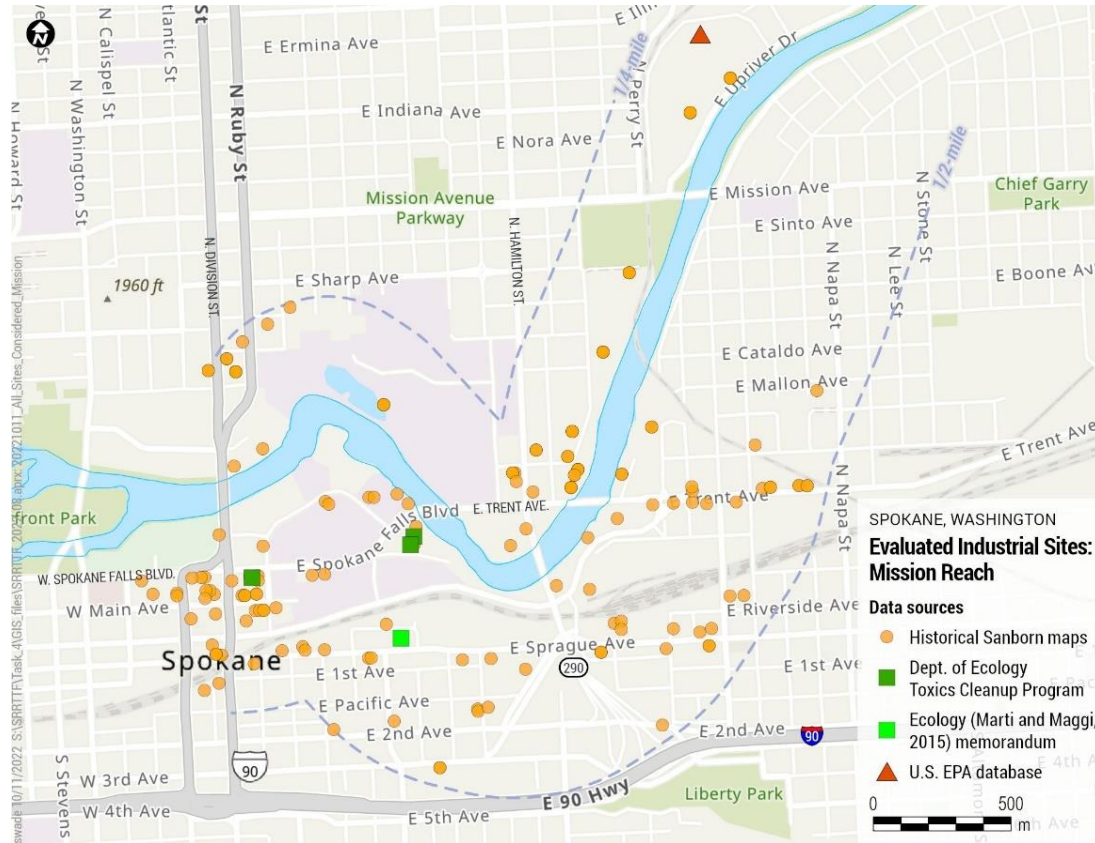


Review of Historical Documents

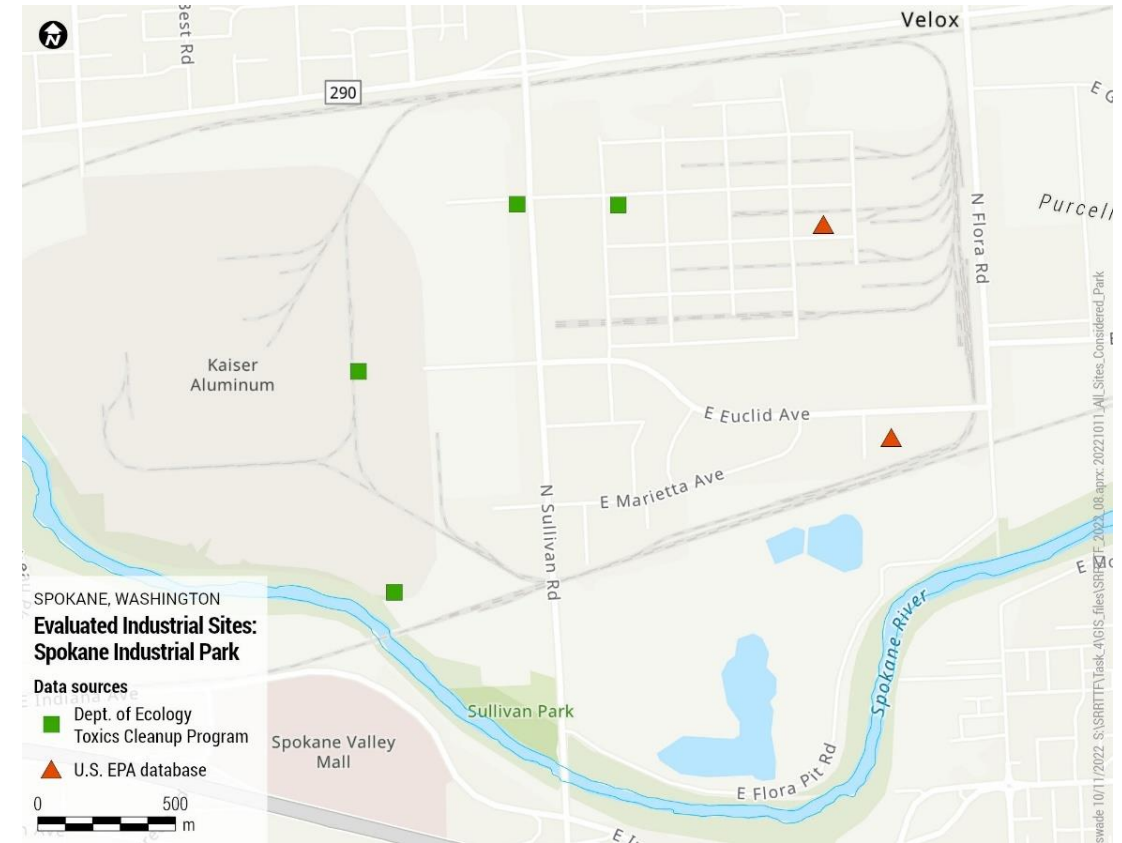
- Additional sites added based upon:
 - Ecology’s “What's in My Neighborhood: Toxics Cleanup” web site
 - Ecology memorandum “Assessment of PCBs in Spokane Valley Groundwater” (Marti and Maggi, 2015).
 - EPA notification data base of companies storing, transporting or disposing of PCBs

Totality of Sites Reviewed

Mission Reach



Spokane Industrial Park



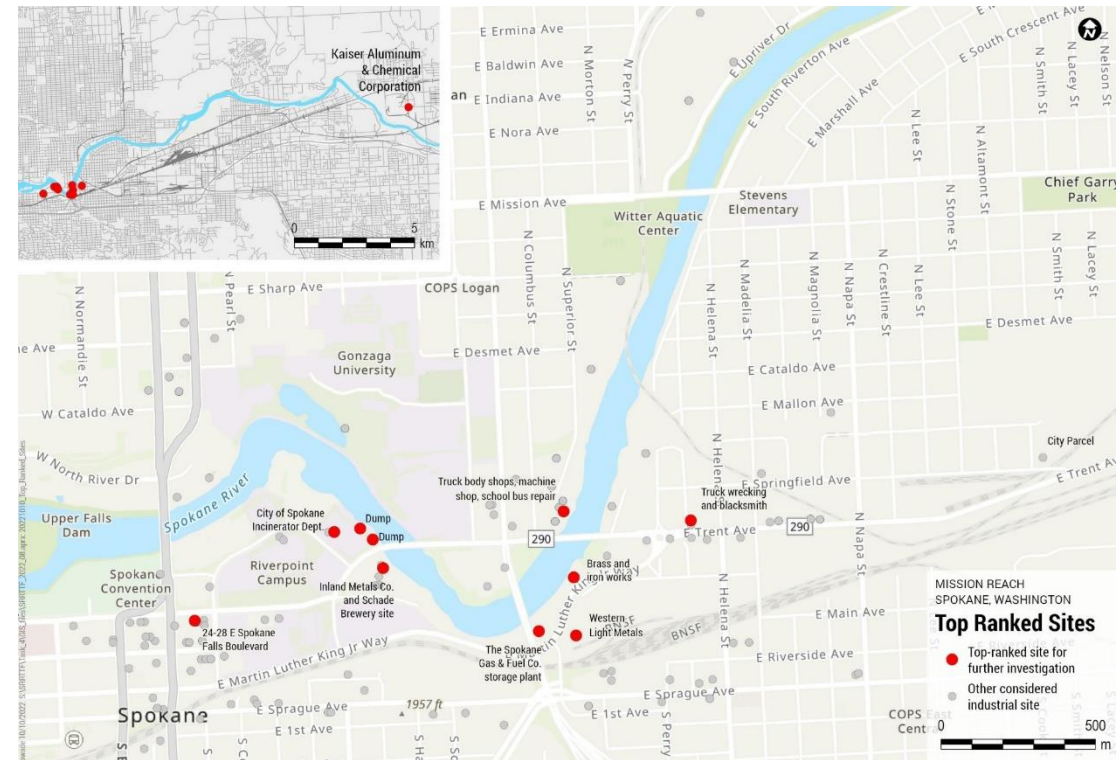
Site Prioritization

- Sites ranked upon joint consideration of
 - Potential for PCB delivery to the river
 - Proximity to observed in-river PCB hot spots
 - Initial level of PCB contamination (or potential for PCB use and release) at site
 - Post-cleanup level of PCB contamination at site
 - Presence of observed off-site PCB migration

Summary of Highest Priority Sites

Rank	Site	Total Score	Site Status
1	Inland Metals Inc	15	No Further Action
2	Kaiser Aluminum & Chemical Corporation	13	Cleanup Started
3	City of Spokane Incinerator Department	10	N/A - Sanborn
3	Dump	10	N/A - Sanborn
3	Dump	10	N/A - Sanborn
6	The Spokane Gas & Fuel Co. storage plant	9	N/A - Sanborn
6	24-28 E Spokane Falls Boulevard	9	Cleanup Started
8	Brass and iron works	8	N/A - Sanborn
8	Truck wrecking and blacksmith	8	N/A - Sanborn
8	Western Light Metals	8	N/A - Sanborn
8	Truck body shop, truck body repairing, machine shop, school bus depot	8	No Further Action

Sites with observed PCB contamination indicated in **boldface**



Questions/Comments?

- If all comments can be successfully addressed, vote for approval

Next Steps

- Purpose of memorandum was to prioritize sites regarding their potential to be an ongoing source of PCBs
- TTWG now considering next steps for the highest priority sites
 - Tiered approach recommended depending upon whether data are available at each site

Next Steps: What Do We Do Next With High Priority Sites?

Sites Prioritized Solely by Sanborn

- Deeper dive into site history and characteristics
 - Review of other historical records
 - Existing Phase I environmental assessments
 - Aerial photographs
 - Industrial directories
 - Interviews with current and prior property owners

Sites Where Data Exist

- Analyses of existing data
 - Comparison of fingerprints between site and nearest river hot spot
 - More detailed assessment of connectivity to the river
- Monitoring options
 - Deploy PCB-detection dog
 - Targeted grab samples?